



Growing Leaders and Strengthening Communities...
Using Pittsburgh as a Classroom.

Women in Leadership

Financial Aid Information

General Information:

The Women in Leadership Program tuition is \$1,295 per participant. Tuition assistance is offered on a sliding scale to participants based on demonstrated financial need and available resources.

Policy:

Applicants seeking tuition assistance are required to submit their tax returns from the previous year. This information is kept confidential. Tuition assistance amounts are determined and announced to program participants no later than three weeks before the program start date.

Deposit:

Accepted applicants are required to pay a deposit of \$125 to secure their spot in the program. The amount of the deposit will be deducted from the program participant's tuition. The deposit is refundable only prior to the start date of the program (March 5, 2019).

Payment Options:

Payment Plan:

Payment is due in full by the start of the program on March 5, 2019. Participants may request to pay tuition through a payment plan by reaching out to Coro staff at fiscal@coropittsburgh.org.

Employer Sponsorship:

Participants are strongly encouraged to approach their employers for partial or total sponsorship of their tuition. A letter explaining how the participation of their employee(s) in WIL will benefit their organization is included in this package. If you have any questions about how to approach your employer, please reach out to Coro staff at fiscal@coropittsburgh.org.

Crowdsourcing:

Coro Pittsburgh utilizes the online crowdsourcing platform Network for Good to raise funds for various initiatives. If you are interested in using Network for Good to raise funds to offset the cost of your tuition, please reach out to Mike Baltzer, Director of External Relations and Alumni Engagement for Coro Pittsburgh - mbaltzer@coropittsburgh.org.



Growing Leaders and Strengthening Communities...
Using Pittsburgh as a Classroom.

Women in Leadership Sponsorship Request

The Coro Center for Civic Leadership (Coro Pittsburgh) is a nonpartisan, nonprofit organization founded in 1999 to develop leaders who have a passion to revitalize communities. We are part of a national network, founded in San Francisco in 1942, with additional centers in Los Angeles, St. Louis, and New York City.

Coro's **Women in Leadership (WIL)** is a 5-month, part-time training program that provides women the opportunity to refine their personal and professional leadership competencies, and connect with other women from diverse backgrounds. Gender-specific workforce issues are discussed. Graduates of the program gain improved leadership effectiveness to apply to their personal and professional lives, an enhanced ability to network within the community, and the access to resources to produce results.

Tuition for Women in Leadership is \$1,295. By sponsoring an employee's participation in WIL (in part or in whole), your organization can benefit from the personal and professional development that they will gain from the experience. Participants can look forward to:

- Exploring the challenges and opportunities facing women in Southwestern Pennsylvania
- Connecting with others who are passionate about improving the status of women
- Receiving mentorship while taking action to improve the status of women
- Connecting to a network that can benefit both them and your organization
- Honing their skills in group facilitation and public speaking
- Learning to build strong teams by leveraging people's strengths
- Acquiring and practicing negotiation skills

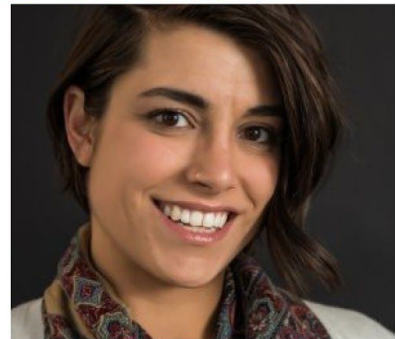
NOTABLE WOMEN IN LEADERSHIP ALUMNAE



Lynn Banaszak Brusco
(Women in Leadership VIII)
*Executive Director, Disruptive Health Technology Institute,
Carnegie Mellon University*



Stephanie Rideau
(Women in Leadership XXI)
*Director, Global Head of Risk Capital Adequacy,
BNY Mellon*



Sara Innamorato
(Women in Leadership XIX)
*Founder & Owner, Innamo Co.
Candidate for PA State Representative Dist. 21*

If you have questions about employer sponsorship, please contact Coro staff at fiscal@coropittsburgh.org.



Growing Leaders and Strengthening Communities...
Using Pittsburgh as a Classroom.

Women in Leadership

Sponsorship Form

PARTICIPANT NAME: _____

YOUR NAME: _____

YOUR TITLE: _____

YOUR PHONE NUMBER: _____

YOUR EMAIL ADDRESS: _____

ORGANIZATION NAME: _____

ORGANIZATION ADDRESS: _____

STREET

CITY

ST

ZIP

SPONSORSHIP AMOUNT

Tuition for Women in Leadership is \$1,295. Every dollar that you put towards Women in Leadership is a dollar towards improving the lives of women in Southwestern Pennsylvania and beyond.

\$50

\$100

\$500

\$1000

\$1,295

OTHER _____

Please remit form and payment (payable to Coro Pittsburgh) to: Fiscal / Coro Pittsburgh
26 S 27th Street
Pittsburgh, PA 15203